

## ActiveTrac™ Software



### Description

ActiveTrac™ Software provides an enterprise-wide personnel, asset and equipment monitoring solution with integrated logging, tracking, alert notification, status monitoring and reporting functions. The software combines operator-friendly displays, flexible configuration and instantaneous query functions to offer a powerful tool for tracking movements and automatically controlling remote devices. ActiveTrac™ has a range of applications, including resource management, asset protection, status monitoring and inventory logistics.

ActiveTrac™, coupled with AXCESS' ActiveTag™ automatic identification products, offers customers the ability to easily monitor and track asset and personnel movements throughout a facility. The system is based on a flexible control point architecture that allows the user to activate and identify tags at specific locations within the facility. Identification and location data broadcast by the tags is gathered by network receivers and forwarded to the ActiveTrac™ application. The software time stamps, then displays and logs the event information in a general-purpose database where it can be accessed via standard queries and reports, including quick retrieval of "last seen" location and movement history. Additional reports and queries can be customized to the user's specifications.

When combined with the AXCESS digital video product line, ActiveTrac™ offers the ability to simultaneously capture a digital image of the event for video verification and evidence gathering. In addition, each tag record can be linked to a stored image of the person or object. This image can then be displayed whenever the corresponding tag read is received for immediate visual verification.

### Features

**Functional Linkage™** - assets or vehicles can be linked to personnel to allow authorized movement without alarming

**Operator Alerts** - pop-up windows provide instant notification of alarm conditions and exceptions

**Instant Query** - quickly displays additional information about a record or event, such as "last seen" location or movement history, by simply clicking a button or screen element

**Data Management** - event data is stored in an ODBC database for flexible customized report/query using an off-the-shelf report generator

**Ease of Integration** - operates stand-alone or in background with logical interfaces to legacy applications via relay control and ASCII scripts

**Network Leverage** - runs on the Windows platform, communicating with devices over the LAN/WAN using minimal bandwidth

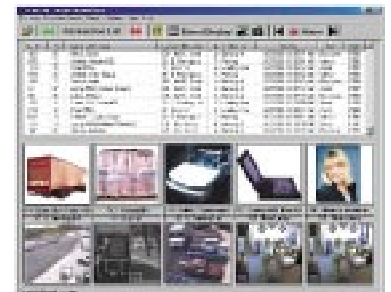
**Open Architecture** - connects directly to network devices via industry standard RS-232 serial port or Ethernet TCP/IP network interfaces

**Configurable Display** - operator can selectively view event logs, real-time reads, stored images, live video snapshots and alarm notification windows

**Image Import** - administrator can associate stored images with tags for instant display and visual verification

### Minimum System Requirements

- PC with 1 GHz CPU
- CD-ROM Drive
- 256 MB DRAM
- 20 GB EIDE hard disk drive
- High speed EIDE disk controller interface
- 1-serial port
- 1-parallel port
- SVGA Monitor
- Windows® 2000 Professional
- TCP/IP LAN Card



3208 Commander Drive  
Carrollton, Texas 75006 USA  
972-407-6080 / 800-588-6080  
Fax 972-407-9085  
sales@accessinc.com  
www.accessinc.com