

# M1-POS

## Agenda

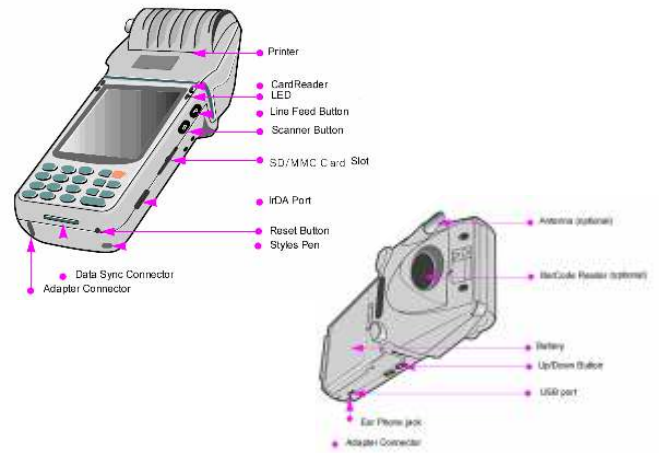
1. **Product Image**
2. **Hardware Features**
3. **Specification**
4. **Optional Devices & Accessories**
5. **Handheld POS Market**
6. **Applications**
7. **Link to other file**
8. **Software**
9. **Who should be our customers?**
10. **Other issues**
11. **Schedule**
12. **Future Product Development**



## Product Image



## M1-POS Hardware Feature



## Specifications

<b>Form Factor</b>	<b>Printer + MSR + Wireless communication all in one 3.5" Business PDA</b>	
<b>OS</b>	<b>Microsoft Windows CE.Net 5.0</b>	
<b>CPU</b>	<b>Intel PXA27x 520MHz</b>	
<b>Memory</b>	<b>64MB NAND (up to 256MB) / 64MB SDRAM (up to 128MB)</b>	
<b>LCD</b>	<b>320x240, 3.5" 260K color (18-bits) Transflective TFT-LCD with Touch Screen</b>	
<b>Communication</b>	<b>802.11b/g Wireless LAN built-in. GSM/GPRS (option).</b>	
<b>MSR</b>	<b>Track 1, 2, 3 support / multi direction. Smart Card reader (option)</b>	
<b>Printer</b>	<b>2 inch Thermal Printer built-in. 384 dots per line. Speed 70 mm/sec.</b>	<b>12m paper roll</b>
<b>Barcode Scanner</b>	<b>Symbol SE955 ID laser Barcode Scanner.</b>	
<b>Battery</b>	<b>3800 mAh Li-ion rechargeable (Detachable)</b>	<b>Charging time :2~4 hrs Standby : 8 hrs. Fully run : 1.3 hrs</b>
<b>Expansion</b>	<b>SD/MMC card slot.</b>	
<b>Keys</b>	<b>19-key keypad &amp; 4 Functional keys.</b>	
<b>Indication</b>	<b>4 LEDs (GPRS/GSM, Charging Printer, WLAN) &amp; Buzzer</b>	
<b>I/O</b>	<b>USB/Serial, IrDA, Speaker (0.6W) , Stereo Ear-mic jack, DC jack / 26 PIN I/O Con., GPS antenna.</b>	
<b>Weight</b>	<b>400 gram. (with option items)</b>	
<b>Dimension</b>	<b>76.2(max. 88.1) x 222 x 33.3(max. 49.7) mm</b>	

**Optional Devices:** ■ Barcode Scanner (Symbol Se955) ■ IC Card Reader ■ GSM/GPRS

## Accessories:



Cradle

Wrist Band

Leather Case

Battery Pack

## Handheld POS Market

- Handheld POS markets grow because systems leverage customer loyalty programs to increase sales. Incentive pricing, coupon management, repeat business, customer service and managed transaction systems all can be implemented in an efficient manner using the handheld terminal computers. Both the scanner and the handheld terminal have separate computing capability to create efficient systems.
- **Handheld points of sale computer unit market shipments at 7 million in 2004 are anticipated to reach 53 million by 2011.** Markets will grow as the retail and inventory process is made significantly more efficient by portable terminal function set including wireless transport and capability. E-commerce initiatives are enabled. Implementation depends on groups of people defining goals together to achieve a common goal.

### 50<sup>th</sup> ANNIVERSARY 1956-2006 50 YEARS OF HAND HELD/MOBILE DEVICES

#### [HAND HELD/MOBILE DEVICES CRITERIA BREAKDOWN]

Company	Features	Innovation	Reliability	Support & Service	Pricing	Cumulative Score*
Symbol Technologies	4.47	4.49	4.42	4.14	3.63	21.2
Hand Held Products	4.13	4.13	4.10	3.67	3.64	19.7
Micros	4.32	4.23	4.15	3.82	3.07	19.6
Intermec Technologies	4.15	4.23	4.00	3.62	3.46	19.5
Fujitsu	3.89	3.89	3.92	3.59	3.26	18.6

## Applications

- Delivery
- Stadium & Arena Sales
- Restaurant & Food Services
- Retail
- Conventions / Exhibitions
- Fairs & Markets
- Traveling Sales People
- Limousine & Taxi
- Parking Lot Management
- Supermarket
- Hospital
- Casino
- Airport
- Ticketing
- Bank
- Theaters & Museums
- Hotel Management
- Logistic
- Golf & Tennis Venues

## Hospitality

- Table reservation
- Table availability
- Food ordering & send to kitchen
- Picture menu showing
- Information check interface – Today’s special, Chief’s recommendations, Meals availability, Promotion info., Customer database...
- Tableside payment
- Receipts & coupons printing
- Work recorder

### Application Supply Chain



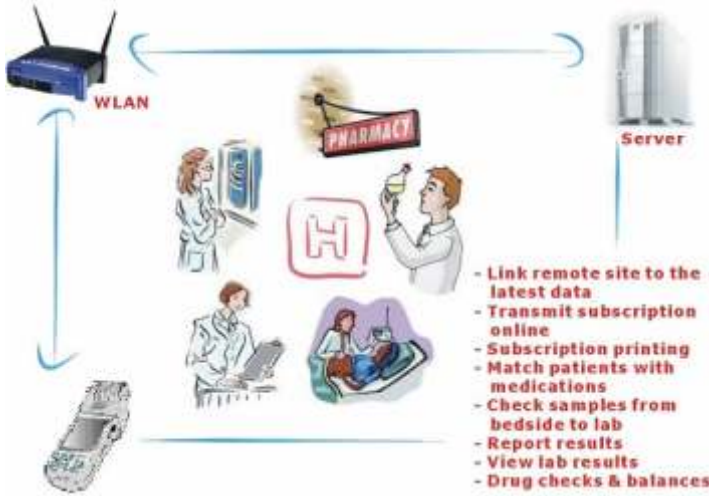
## Supply Chain

- Inventory Check
- Item info. Check
- Commodity tracking
- Incoming & outgoing shipment mgt. & control
- Price mgt.
- Shelf mgt.
- Data collector
- Instant Messaging

### Application Hospitality



## Application Health Care



### Health Care

- Bedside medical record check
- Lab result check
- Database resource check
- Electronically subscription
- Drug control
- Instant Messaging
- Hospital
- Pharmacy

## Markets / Applications

### Transportation & Government



### Transportation

- Payment
- Receipt printing
- Schedule check & control
- Instant messaging
- Street direction
- Traffic report
- Parking lot management

### Government

- Law enforcement
- Roadside parking mgt.
- Patrolling attendance & check
- Street direction
- Information check – criminal data, lost people, stolen cars...
- Security – container check at Custom
- Meter recording

### Who should be our customers?

- POS system integrators
- Hardware distributors
- Hardware reseller
- ERP system integrators
- Any type of VAR